

How to use separate outputs with Addictive Drums 2

Enabling separate outputs inside Addictive Drums 2

To route the AD2 mixer channels to separate channels in your host, you must first enable the outputs inside AD2. Simply open AD2 and click the Out button for every mixer channel you want to route. You also get the option to choose between [Pre Fader] and [Post Fader], both with or without the Master channel.



The rest of this guide contains instructions on how to continue routing the outputs in your host software. This guide may not be up to date when you read this, so please refer to your host manual if you have any questions.

[Logic](#)

[Reaper](#)

[Pro Tools](#)

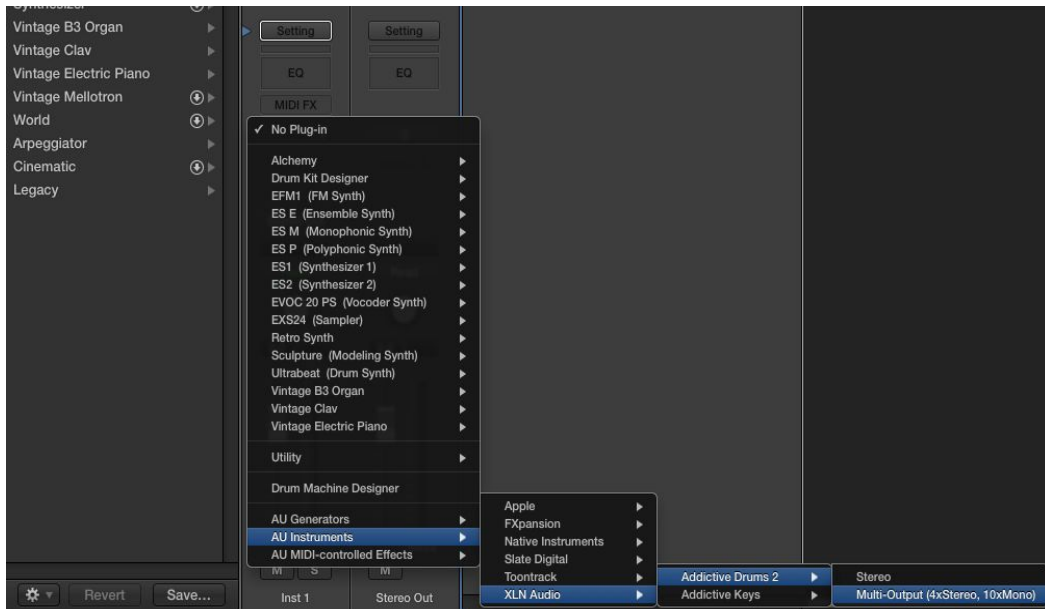
[Ableton Live](#)

[Cubase](#)

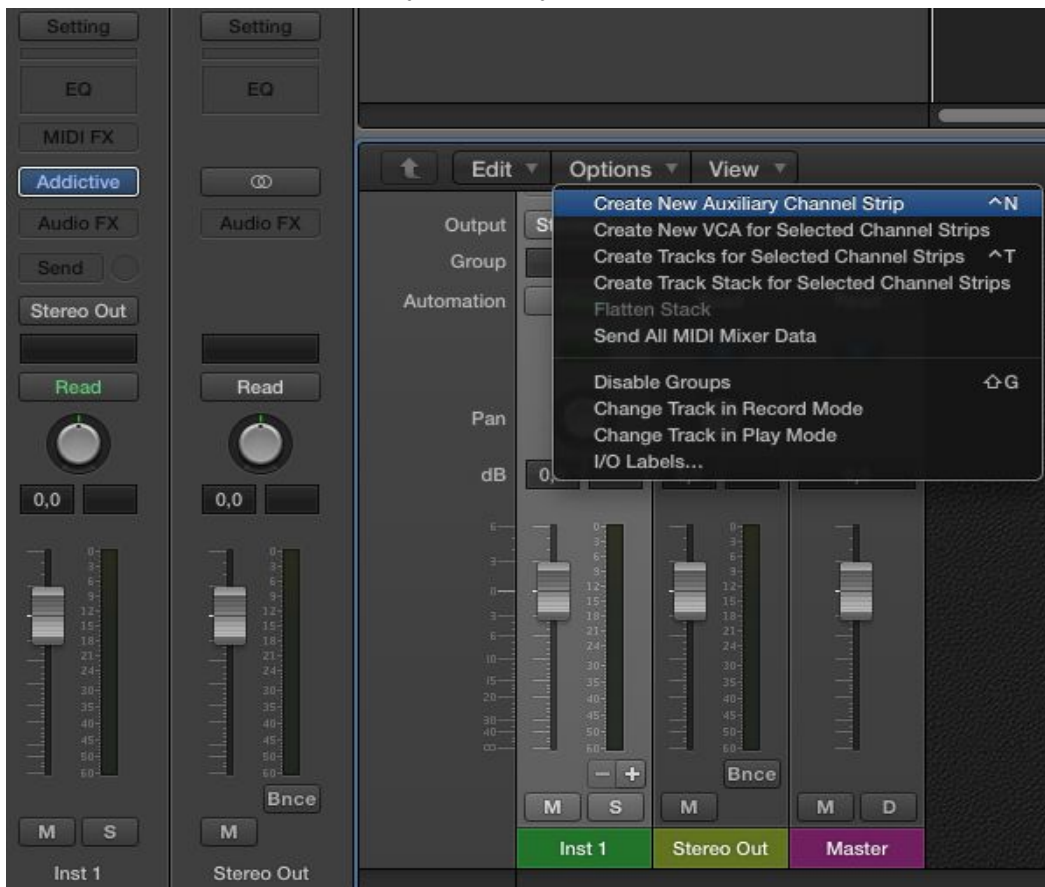
[Sonar](#)

Logic:

1. Create a Multi-Output version of Addictive Drums 2



2. Open the Addictive Drums 2 interface, go to the KIT page and click the Out arrow for every mixer channel you want to route (see p.1 of this guide for more info)
3. Go to the Mixer in Logic and click Options -> Create New Auxiliary Channel Strip (or press Ctrl + N). Do this for every channel you want to route.



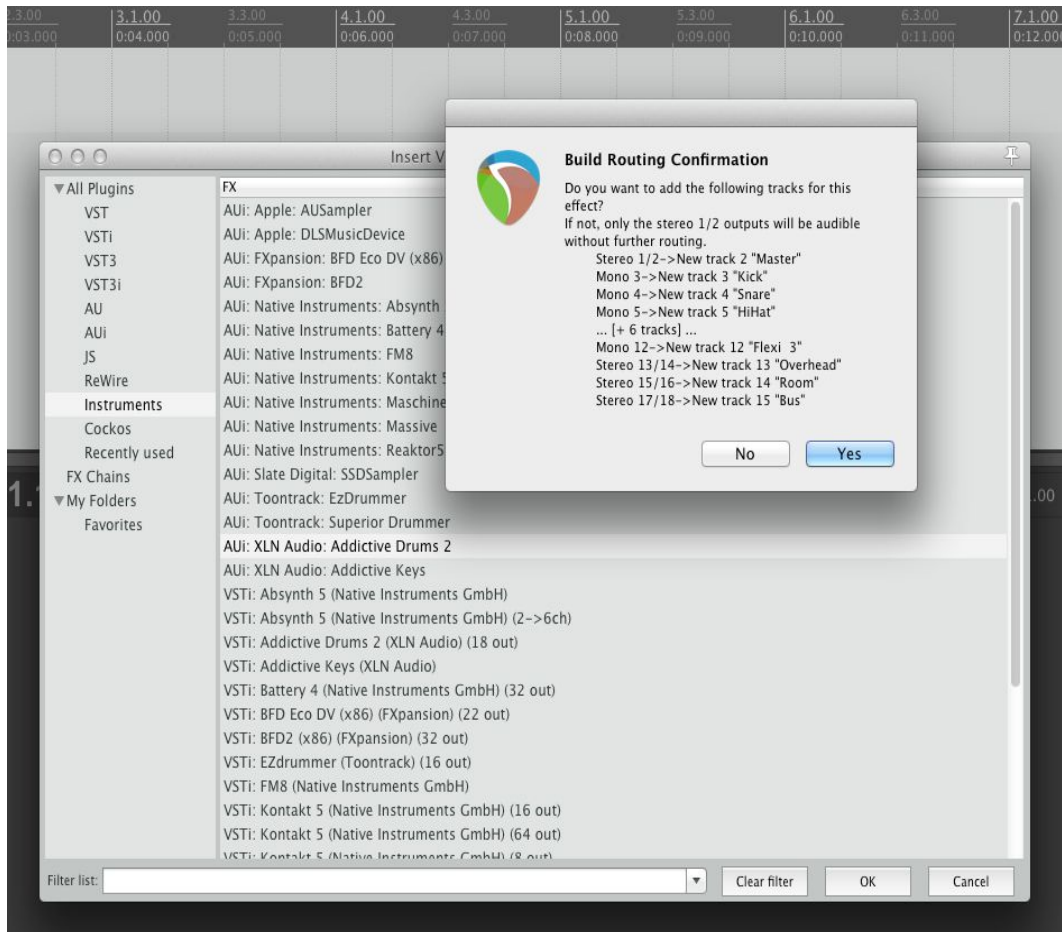
- Click the input box for the first Aux channel, go to Inst 1 (or whatever the name of the AD2 track is) and click Addictive D 3 to route the kick drum. Addictive D 4 is Snare, 5 is Hihat and so forth. And the stereo channels: 13-14 is Overhead, 15-16 is Room and 17-18 is the Bus.



- Don't forget to raise the volume for the Aux tracks since they are on zero by default.
- Done!

Reaper:

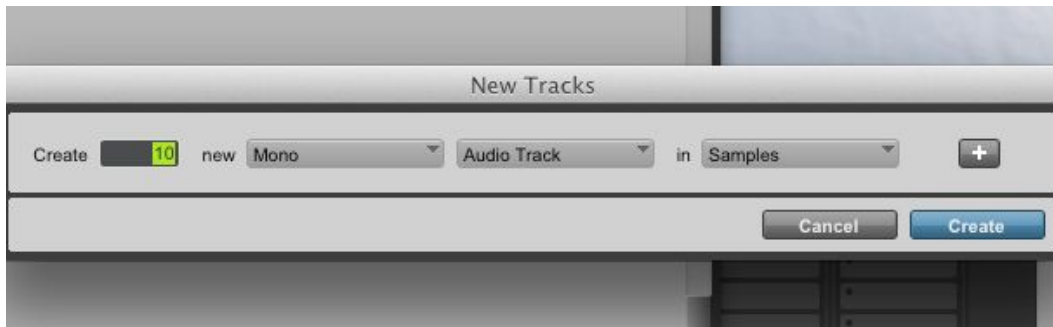
1. Go to “Insert Virtual Instrument On New Track...”
2. Select XLN Audio: Addictive Drums 2 and click OK
3. A “Build Routing Confirmation” dialogue should now pop up, prompting you to add tracks for this effect. Click Yes.



4. Open the Addictive Drums 2 interface, go to the KIT page and click the Out arrow for every mixer channel you want to route (see p.1 of this guide for more info)
5. Done!

Pro Tools:

1. Load Addictive Drums on a Stereo Instrument Track
2. Open the Addictive Drums 2 interface, go to the KIT page and click the Out arrow for every mixer channel you want to route (see p.1 of this guide for more info)
3. Create mono and stereo audio tracks for routing. That's 10 mono and 3 stereo audio tracks if you want to route all channels from Addictive Drums into Pro Tools.



4. Go to the Mixer in Pro Tools and click the input button for the first mono audio track and go to plug-in -> Addictive Drums 2 -> Kick.



5. Repeat step 4 for the rest of the mono and stereo tracks.
6. Done!

Ableton Live:

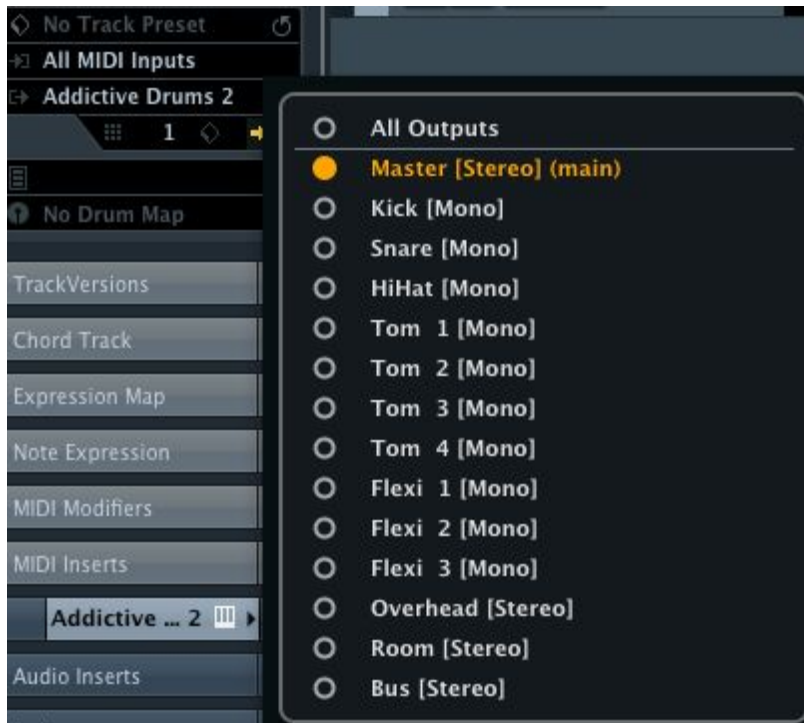
1. Load Addictive Drums on a MIDI track
2. Open the Addictive Drums 2 interface, go to the KIT page and click the Out arrow for every mixer channel you want to route (see p.1 of this guide for more info)
3. Insert Audio tracks for each channel you want to route. That's 13 tracks (10 mono and 3 stereo) if you want to route all channels from Addictive Drums into Ableton Live
4. In the "Audio From" input dropdown on the first audio track, select "Addictive Drums 2"



5. In the dropdown box directly below, select Kick-Addictive Drums 2
6. One step below, click the Monitor [In] button to let sound through the channel
7. Repeat steps 4-6 for the rest of the tracks until all channels are routed.
8. Done!

Cubase

1. Open up a new project in Cubase then select to Insert AD2 as an Instrument track.
2. To the left of the Track you have just created in the Inspector View you should see just to the right of the words Addictive Drums 2 a small arrow pointing right emerging from a box. Click on this to see the window for all the outputs available from AD2.



Make sure you click on the All Outputs button to activate all outputs in Cubase.

3. Then back in AD2 click on the small arrow that is just beneath the Kick channel and select Separate Out (or Separate Out + Master depending on what you want). At the same time hold down the Alt key and then Ad2 will select all channels to be assigned as a separate out.

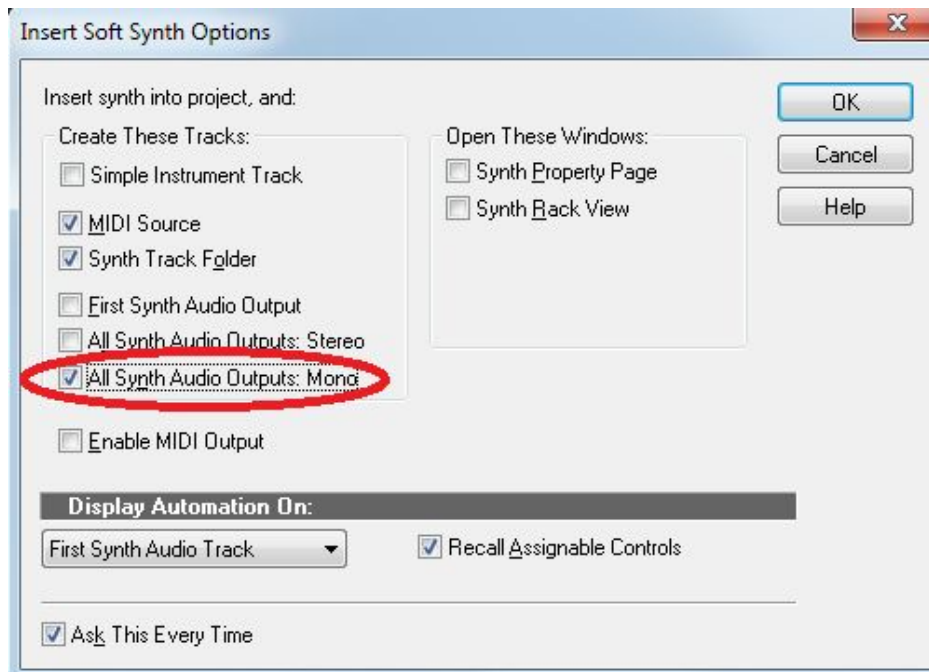
4. Back in Cubase in the Track for AD2 select to Show Automation and then the separate tracks for AD2 will appear below the main AD2 track.



5. Done!

Sonar

1. Create an instance of AD2 and in the Insert Soft Synth Options window, make sure that All Synth Audio Outputs: Mono is checked.



2. Click the Out-arrow in the AD2 mixer for every mixer channel you want to route (see *p. 1 of this guide*).
3. Note that all the outputs appear as mono channels, which means that channel 15 is Overhead Left, 16 is Overhead Right, 17 is Room Left and so on. If you want to treat the Overhead, Room and Bus outputs as stereo channels, you can send them to stereo buses, one for every stereo pair. If you have any questions about how to use buses, please refer to your Sonar manual.
4. Done!